



2018 Los Amigos Day Camp

Firestone Scout Reservation
Emergency Plan

Emergency Preparation

First Aid Kits – Kits are placed throughout the camp at each program area. First aid kits are for bumps, bruises, cuts & moral support only. All injuries should be reported to the Camp Nurse. More advanced supplies are located at the camp HQ.

AEDs – There are two AEDs at Firestone. One located in the infirmary and the other in the ranger vehicle.

Fire Extinguishers – Extinguishers are located at Camp HQ and in the truck or selected, well-marked stations during Camp operating hours.

Fire Hose Hook-ups – The ranger truck is equipped with a two inch hose, nozzle and spanner wrench in the case of a spot fire. There are multiple hydrants located throughout the property. The purpose of equipment is structure protection and not for fighting forest fires. That is left to the professionals.

Back boards – All boards are located in the Firestone infirmary.

Communication

Radios – Firestone is equipped with a repeater that allows for radio coverage throughout the reservation. The Day Camp Director has a radio to stay in communication with Firestone staff. Each camp program area will have a walkie talkie to stay in contact with HQ.

Land Lines – Telephones can be found at the ranger's house and office. There are phones at the Firestone program office, administrative office, Trading Post, and infirmary.

Cell phones – Due to limited signal coverage, cell phones are not reliable and cannot be depended on for emergency uses.



2018 Los Amigos Day Camp

Firestone Scout Reservation
Emergency Plan

Emergency Access

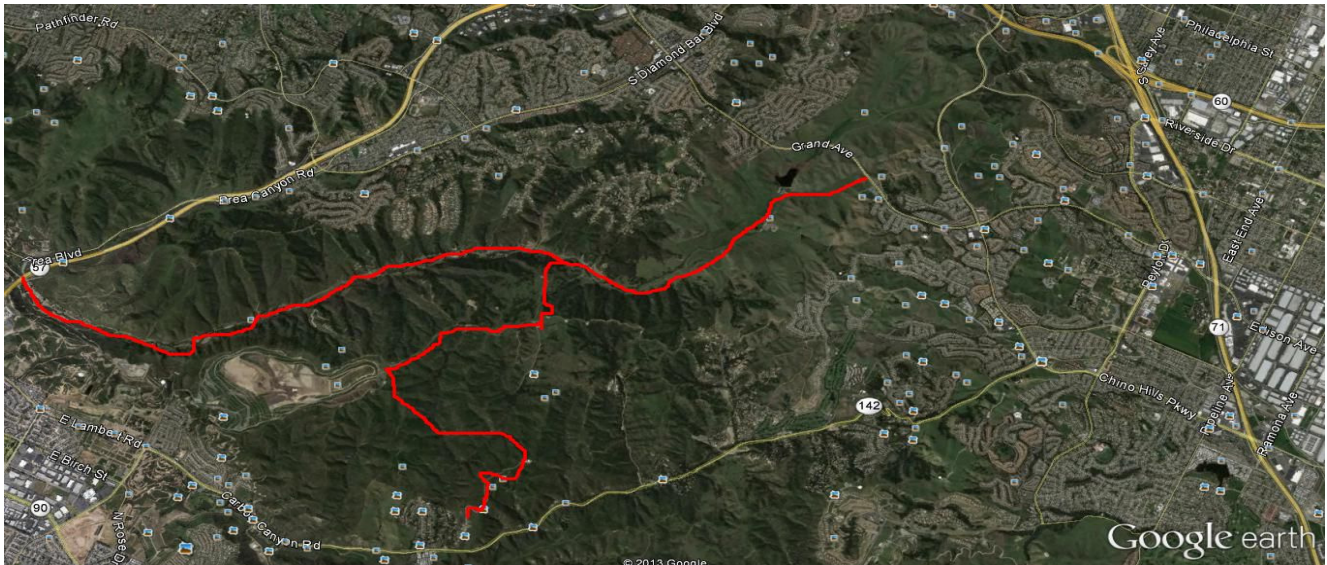
Police and Fire – Access to the camp can be made by the main entrance and from the north east of the property. There is a gate accessible there that exits out to Grand Avenue.

Parking

All cars will be parked in designated areas HEAD OUT. Head out parking is indicated for quick exit from camp.

Emergency Egress

Egress out of the camp can be made through the main entrance and through the northeast point of the property. There is a gate accessible there that exits out to Grand Avenue. Other egress locations are on the top ridge along State Road; the southwest passing through two gates turning to the left at the signal tower (Olinda Road) which head down to Olinda Village.





2018 Los Amigos Day Camp

Firestone Scout Reservation
Emergency Plan

Nearest Emergency Room

St. Jude Medical Center and Hospital
101 E Valencia Mesa Dr.
Fullerton, CA 92835
(714) 449-6900

A 19001 Tonner Canyon Rd
Brea, CA 92821

1. Head **southwest** on **Tonner Canyon Rd**
Partial restricted usage road

2.3
mi

2. Turn left onto **Brea Blvd/Brea Canyon Rd**

Continue to follow Brea Blvd

3.8
mi

3. Turn right onto **E Bastanchury Rd**

1.2
mi

4. Turn left onto **N Harbor Blvd**

0.2
mi

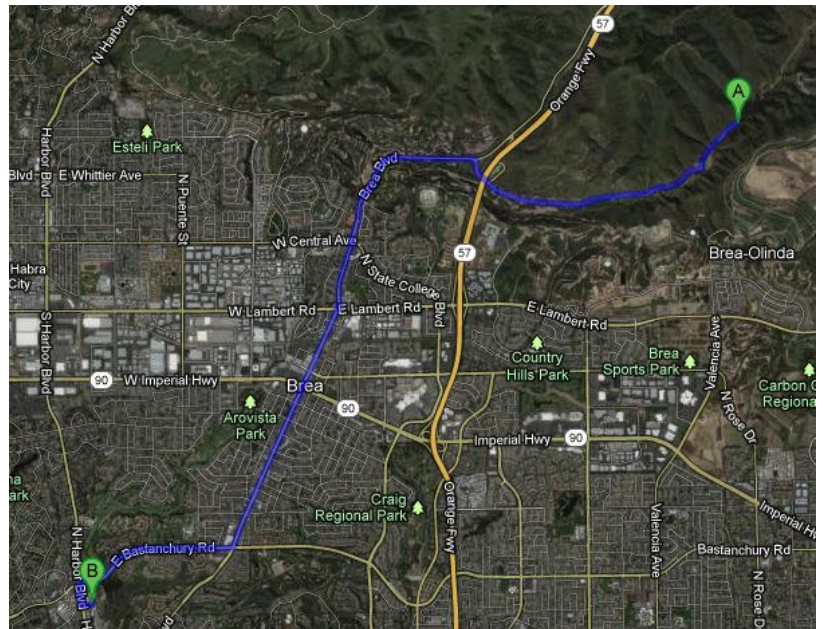
5. Turn left onto **E Valencia Mesa Dr**

381 ft

6. Turn left onto **Youth Way**

36 ft

B St Jude Medical Center
101 E Valencia Mesa Dr
Fullerton, CA 92835



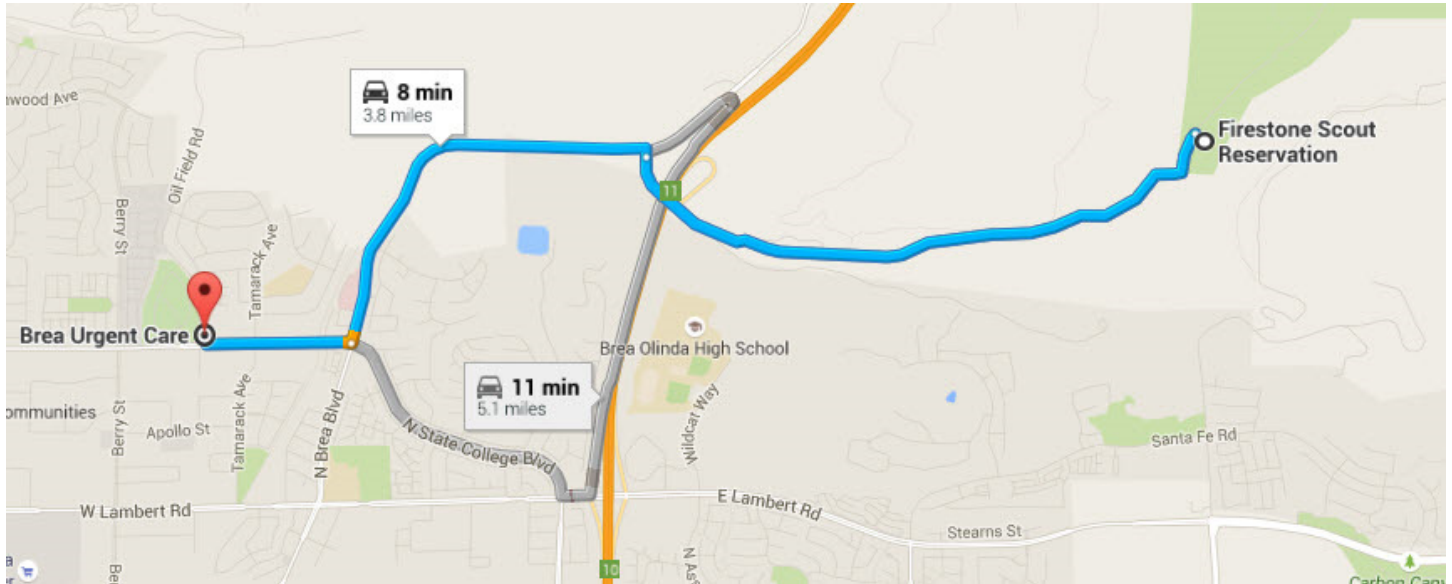


2018 Los Amigos Day Camp

Firestone Scout Reservation
Emergency Plan

Nearest Urgent Care Facility

Brea Urgent Care - 395 West Central Avenue, Brea, CA 92821 (714) 494-2828



Firestone Scout Reservation

19001 Tonner Canyon Road, Brea, CA 92821

Head southwest on Tonner Canyon Rd
2.0 mi

Turn left onto Brea Blvd
1.3 mi

Turn right onto W Central Ave

Destination will be on the right

0.4 mi



Brea Urgent Care

395 West Central Avenue, Brea, CA 92821



2018 Los Amigos Day Camp

Firestone Scout Reservation
Emergency Plan

Emergencies

Medical Evacuation

In the event of a medical need, Brea Urgent Care is more appropriate (and faster) for non-critical emergencies (i.e., stable laceration requiring stitches), and are a few minutes closer to camp. If there is any doubt about it being a life-threatening emergency, any cases not handled by in-camp medical personnel should proceed directly to St Jude.

Emergency Assembly Procedure

A siren will be used as the alarm signal. In the event of an emergency, the siren will sound in multiple bursts. When you hear this signal, proceed immediately to the den/patrol assembly area for roll call and further instructions. Gather your den together BEFORE proceeding to the den area.

Earthquake

REMEMBER TO DUCK, COVER AND HOLD UNTIL THE SHAKING STOPS.

- Areas without tables – everyone will move away from trees (shaking may dislodge loose or dead branches) and sit down until the shaking stops. When the shaking has stopped, Den/Patrol Leaders will utilize the buddy system to move the boys out to the Gathering Area. Den/Patrol Leaders and Den Chiefs may want to lead songs or play a quiet, sit down game to help calm the boys.
- All areas with tables – everyone will drop and hold under the tables until the shaking stops. When the shaking has stopped, Den/Patrol Leaders will use the buddy system to move the boys out to the Gathering area. You may bring unfinished crafts with you and finish them there.
- All children in the Tot Lot will duck, cover, and hold until the shaking stops. After the shaking has stopped, the Tot Lot Leader(s) and youth helpers are to help calm the children by singing songs, etc.
- After the shaking has stopped, ALL people are to stay put in their area until the Camp Director and Program Director have assessed the situation and give directions to proceed. If the EMERGENCY SIGNAL (siren) sounds, proceed to the flag assembly area.
- In the event that parents feel the need to pick up their child, the Den/Patrol Leader will be required to sign the boy out at headquarters and obtain the signature and destination of the person taking the boy.



2018 Los Amigos Day Camp

Firestone Scout Reservation
Emergency Plan

- If an evacuation becomes necessary, we will follow the directions of the Ranger, Scout Executive and/or the Camp Director.
- Den/Patrol Leaders, you will need patience and a little TLC to comfort some of the children who may be scared or worried about their families.

Wildlife

It's possible someone might see a wild animal at Day Camp.

If an animal is spotted, **DO NOT APPROACH IT OR TRY TO CATCH IT.** Clear the area, note the animal's location and send runners to HQ. We will then contact the Park Ranger for assistance.

- Each morning we will attempt to flush out any snakes and wildlife from underneath logs and other likely resting places before anyone approaches.

-

Ants

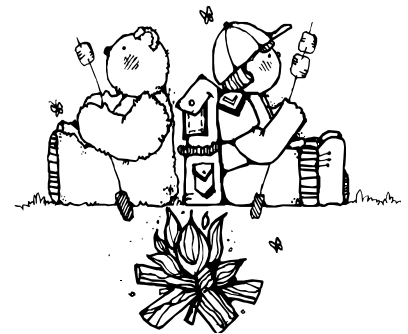
- Do not bother or disturb the ant colonies.
- While the ants at Firestone are **NOT** "fire ants" like those in Texas or Florida, any ants may bite if provoked and produce mild irritation.
- Treat an ant bite by washing and sterilizing the site and trying not to scratch it.

Poison Oak!

- Any poison oak we identify will be cordoned off with **Caution** tape.
- Scouts, Youth, Tots and everyone else at camp will be advised to avoid those areas.

Fire

- Remove children from the danger.
- Each boy will line up with his buddy, and the Den/Patrol Leader will lead the boys away from the fire.
- Leaders should make arrangement to report the fire after providing for the immediate safety of all campers.
- Small fires are to be extinguished immediately by an adult. Fire extinguishers are available at HQ and in the truck.



If fire cannot be immediately extinguished, the day camp director will contact the ranger.

- If the assembly siren sounds, proceed immediately to the den/patrol assembly area.



2018 Los Amigos Day Camp

Firestone Scout Reservation Emergency Plan

- Den/Patrol Leaders will conduct a roll call within their Dens after arriving at the den/patrol assembly area.
- All persons on Staff are expected to help keep the campers calm and quiet and to follow the instructions of the ranger or fire department.

Evacuation Procedures

In the event of an emergency requiring that camp be abandoned, we will use the following procedures:

- The emergency signal is multiple blasts of the bullhorn.
- An emergency in an activity area is to be reported immediately by the staff of that area.
- At the beginning of camp, each camper will be assigned a buddy and instructed to know his buddy's name. When campers are absent for the day, new buddies will be selected.
- Each camper will be informed about the emergency signal and the place to form in line with his buddy.
- Campers will be assigned an alternate buddy group if their buddy is absent.
- The den leader will conduct a head count and buddy check.
- Once the headcount is taken in a den, the den will report to the Opening/Closing Ceremony area.
- The den leader will have campers form buddy lines at the entrance to the activity area and await directions from the Camp Director or Program Director to inform you of the route by which to leave the camp.
- Staff and Youth Volunteers will search the immediate area for missing campers (check latrines, etc.) and get them to their assigned unit.
 - If all campers are present, the den leader will lead them out of camp with an Adult Volunteer or Youth Volunteer at the end of the line.
- If any campers are missing, an assigned adult/emergency person will remain to find the missing camper and lead them out of camp to join their group.
- All persons on Staff are expected to help keep the campers calm and quiet and to follow the instructions of the ranger, camp directors or fire department.
- When the rangers advise the camp to evacuate, the following will take place:
- Each den leader will be issued several Evacuation Roster sheets in their packet at the beginning of camp.
- In the event of a swift camp evacuation, each adult will list their name and those of each camper being transported in their car. Each driver will deliver their Evacuation Driver Sheet to camp directors or the camp administrator before leaving the camp.



2018 Los Amigos Day Camp

Firestone Scout Reservation Emergency Plan

- The Camp Director and Camp Administrator will collect all roster sheets and make sure the camp has been evacuated.
- All vehicles will proceed to the parking lot of the Vons shopping center at Central & N. Brea Blvd.
- Roll will be taken once everyone has arrived at the rally point.
- All vehicles will wait at this location while parents are contacted to pick up their children.

Lost Boy

- Once it has been determined that the boy is not with his group and is nowhere in the general area of the group, immediately notify the Camp Director. If not available, notify Program Director.
- Camp or Program Director notifies the on-site-Scout Executive. Together they interview the den leader while the camp is searched. Radio pertinent information during the search.
- Camp Director will ask for a roll call of all Dens/Patrols at their current stations.
- If the roll call does not locate the missing boy, the Camp Director will direct all available staff to search the immediate area.
- The Camp Director secures the service of two or three staff members to serve as runners and messengers. Give them the boy's name and any other identifying information.
- Check program areas, especially waterfront. (Most lost boys will be located in our checks.) Check the trading post and covered picnic areas-inside, outside, all around. Latrines-inside and behind. Buses, cars, camp vehicles-inside and under.
- If loss occurred when moving from one program area to another and the possibility of taking the wrong trail is likely, have someone check the trails.
- Check nuisance areas that might attract boys, such as playgrounds, streams, amphitheater area, etc.
- If the boy has not turned up yet, gather all the dens at the opening/closing ceremony area for a check in of all boys. Staff will check each den, with the den leader.
- Using all available staff and a camp map, which should be divided into sectors, have the staff search the entire sector in which the boy was last seen. The staff should work in a line, close enough to see the next person plainly. Check everything—on top of something-under something.
- Notify the Executive at the Council office. Alert them that you are contacting the parent, park ranger, and local law enforcement.
 - On-Site Scout Executive to contact the parents. Determine whether there are problems at home.
- Simultaneously with contacting the parents, the Camp Director is to contact Park Ranger and Local Law Enforcement.
 - i. Give as accurate a description of the boy as possible.
 - ii. Tell how long the boy has been missing.
 - iii. Ask them to mobilize a search party.

The Camp Director's duties are to:

- a. Stay near the phone.



2018 Los Amigos Day Camp

Firestone Scout Reservation
Emergency Plan

- b. Stay in one place - preferably the Camp Administration Center, which is also the First-Aid Station.
- c. Direct Operations.
- d. Continue the staff searches until the boy is found or a large-scale search is mobilized.

All Staff and Volunteers should refer all media contacts or requests for information to the Scout Executive.

- The Scout Executive will notify the Orange County Council Office at (714) 546-4990

Severe Weather

- In the event of rain beyond a light drizzle/sprinkle or short term shower, parents will be called to pick up their children.
- Children will be kept in a sheltered area until picked up by an authorized adult.
- Den Leaders will stay with their dens until the children have been picked up or assigned to another leader by the Camp Director.

- Any indication of a lightning storm the camp will be closed.
 - In the event of a threat of thunderstorm or heavy winds, ALL leaders will line up the boys with their buddy and take them to the den/patrol assembly area.
 - **IF LIGHTNING OR HEAVY WINDS ARE IMMINENT, THE CAMP WILL EVACUATE TO CARS IN THE PARKING AREA FOR TEMPORARY COVER.**
 - **DO NOT STAY UNDER ANY TREES! LIGHTNING WILL STRIKE THE TALLEST OBJECT. DO NOT STAY UNDER METAL-FRAME COVER!**
- We will stay in the den/patrol assembly area or parking area away from trees until the storm blows over and we can resume normal activities.
- In the event that camp is able to continue, but parents feel the need to pick up their child, the Den Leader will be instructed the parent to fill out a "Leaving Early" form.

Accidents, Sickness, Communicable Disease or Infection

- "Hurry case" – call 911 immediately via the park ranger.
- All illnesses will be brought to the attention of the Camp Medic for immediate attention and assessment. It will be up to the camp medic to determine if someone has a communicable disease and needs to be separated from the rest of camp.
- The Camp Director is to be notified whenever it is determined that a child should be sent home due to illness or other. The Camp Medic is to notify the Camp Director in cases where the child is unable to re-join their group within one hour of being sent to the First Aid station.



2018 Los Amigos Day Camp

Firestone Scout Reservation
Emergency Plan

- Refer to the Pink Folder any time someone is sent to the hospital.

Hazardous Materials Exposure

There is no plan to have hazardous materials in camp. Should someone come into contact with a hazardous material, we will access the MSDS for that material and proceed according to those instructions. The camp medic will then evaluate the situation and determine how to proceed.

Natural & Manmade Hazards

There are no major or unusual hazards in the Green Islands campsite.

Equipment

The only "equipment" in camp will be the rental truck used to transport camp equipment to camp. This vehicle will be operated by authorized personnel only.